



Monthly Review on Price Indices



July, 2019
(Base 2007-08)

Government of Pakistan
Ministry of Planning, Development and Reform
Pakistan Bureau of Statistics
Islamabad

Inflation in Brief

1. CPI inflation General increased by 10.3% on year-on-year basis in July, 2019 as compared to an increase of 8.9% in the previous month and 5.8% in July 2018. On month-on-month basis, it increased by 2.3% in July 2019 as compared to an increase of 0.4% in the previous month and an increase of 0.9% in corresponding month i.e. July 2018.
2. Core inflation measured by non-food non-energy CPI (Core NFNE) increased by 7.8% on (YoY) basis in July 2019 as compared to an increase of 7.2% in the previous month and 7.6% in July 2018. On (MoM) basis, it increased by 1.7% in July 2019 as compared to an increase of 0.3% in previous month, and an increase of 1.2% in corresponding month of last year i.e. July 2018.
3. Core inflation, measured by 20% weighted trimmed mean CPI (Core Trimmed) increased by 8.0% on (YoY) basis in July 2019 as compared to 7.3% in the previous month and by 5.9% in July 2018. On (MoM) basis, it increased by 1.7% in July 2019 as compared to an increase of 0.4% in the previous month and an increase of 0.9% in corresponding month of last year i.e. July 2018.
4. The CPI by Income Quintiles and Commodity Groups for July 2019 (MoM and YoY) is placed at **Annexure-C**.
5. SPI inflation on YoY basis increased by 12.2% in July 2019 as compared to an increase of 10.6% a month earlier and an increase of 3.6% in July 2018. On MoM basis, it increased by 2.6% as compared to an increase of 1.6% in the previous month and an increase of 1.2% in corresponding month of last year i.e. July 2018.
6. WPI inflation on YoY basis increased by 13.5% in July 2019 as compared to an increase of 12.7% a month earlier and an increase of 10.5% in July 2018. WPI inflation on MoM basis increased by 3.1% in July 2019 as compared to an increase of 0.3% a month earlier and an increase of 2.4% in corresponding month of last year i.e. July 2018.
7. Figures 1 and 2 show graphically the data of Table1. Table1.1 shows "Period Average" and "YoY" percent changes in indices of three years.

Table 1: Inflation (%) (Base 2007-08)

Period	CPI						Core Inflation				SPI**		WPI	
	General		Food		Non-food		NFNE*		Trimmed		YoY	MoM	YoY	MoM
	YoY	MoM	YoY	MoM	YoY	MoM	YoY	MoM	YoY	MoM				
Jun-18	5.2	0.6	3.0	0.8	6.7	0.4	7.1	0.3	5.4	0.2	1.9	1.8	7.6	1.5
Jul-18	5.8	0.9	3.5	0.6	7.4	1.2	7.6	1.2	5.9	0.9	3.6	1.2	10.5	2.4
Aug-18	5.8	0.2	3.3	0.2	7.6	0.2	7.7	0.2	5.9	0.2	3.3	0.2	11.0	0.8
Sep-18	5.1	-0.1	1.4	-0.7	7.7	0.3	8.0	0.4	5.8	0.1	1.0	-0.1	9.2	-1.5
Oct-18	6.8	2.3	2.7	1.9	9.6	2.6	8.2	1.1	6.7	0.8	1.3	1.1	13.1	4.2
Nov-18	6.5	0.1	1.8	-0.5	9.8	0.5	8.3	0.4	6.7	0.3	1.3	0.3	13.5	0.7
Dec-18	6.2	-0.4	0.9	-1.4	9.8	0.2	8.4	0.3	6.9	0.3	2.0	0.0	12.1	-0.9
Jan-18	7.2	1.0	2.4	0.3	10.5	1.4	8.7	1.1	7.7	1.0	3.7	0.6	9.9	-0.2
Feb-19	8.2	0.6	5.0	1.4	10.4	0.1	8.8	0.2	7.7	0.2	6.5	1.5	11.0	0.9
Mar-19	9.4	1.4	8.4	2.9	10.1	0.5	8.5	0.5	7.9	0.4	8.8	1.6	12.6	1.7
Apr-19	8.8	1.3	8.6	1.7	9.0	1.0	7.0	1.0	7.2	0.9	9.3	0.9	13.8	2.3
May-19	9.1	0.8	8.7	1.1	9.4	0.6	7.2	0.4	7.5	0.4	10.8	1.2	14.0	1.4
Jun-19	8.9	0.4	8.2	0.4	9.3	0.4	7.2	0.3	7.3	0.4	10.6	1.6	12.7	0.3
Jul-19	10.3	2.3	9.2	1.5	11.1	2.8	7.8	1.7	8.0	1.7	12.2	2.6	13.5	3.1

*NFNE is non-food non-energy, ** SPI for quintile 1. Digits 0.0* are due to rounding off.

Table 1.1: Period Average and YoY % Changes of Indices (Base 2007-08)

Index	Average July- July % changes			July over July % changes		
	2019-20	2018-19	2017-18	2019	2018	2017
CPI	10.34	5.83	2.91	10.34	5.83	2.91
SPI	12.16	3.58	-0.40	12.16	3.58	-0.40
WPI	13.46	10.50	0.66	13.46	10.50	0.66

Figure 1: CPI Inflation YoY, Special Indices

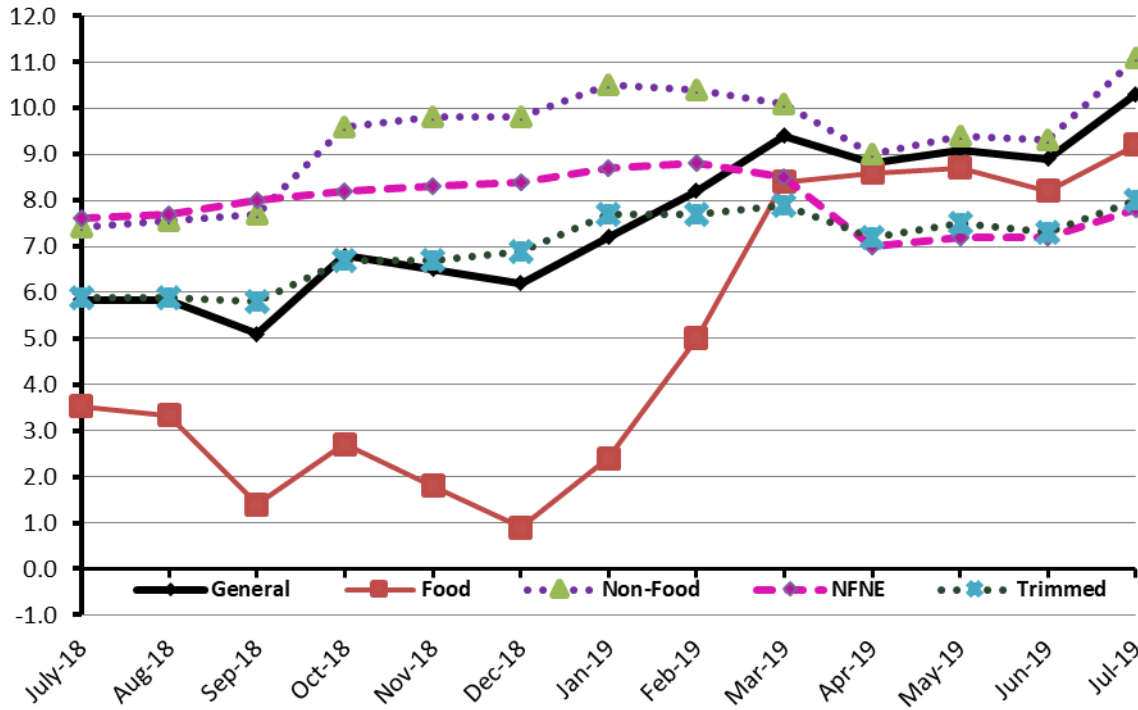
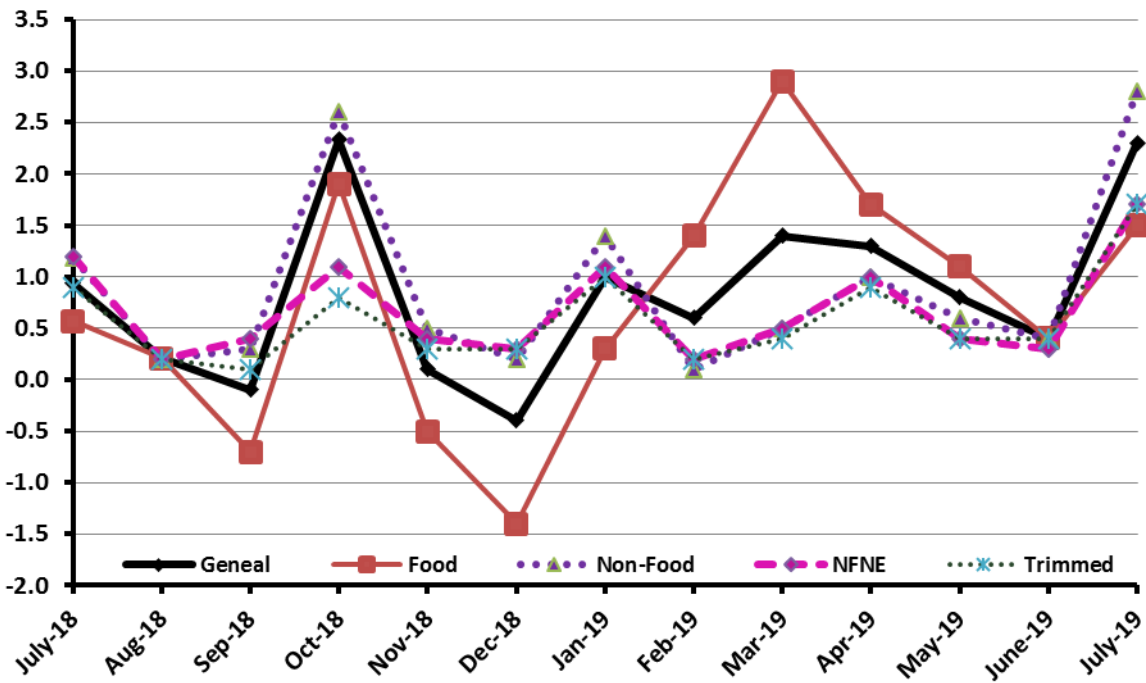


Figure 2: CPI Inflation MoM, Special Indices



I. Consumer Price Index (CPI)

The Consumer Price Index of July 2019 is increased by 2.29% over June 2019 and increased by 10.34% over corresponding month of the last year i.e. July 2018.

Table 2: Consumer Price Index by Group of Commodities and Services (Base 2007-08)

No	Group	Group Weight (%)	Indices			% Change July 2019 Over		Impact (In % points) July 2019 Over	
			July 2019	June 2019	July 2018	June 2019	July 2018	June 2019	July 2018
	General	100.00	252.46	246.82	228.80	2.29	10.34	2.29	10.34
1.	Food & Non-alcoholic Beverages	34.83	256.84	254.35	238.08	0.98	7.88	0.35	2.86
	<i>Non-perishable Food Items</i>	29.84	253.83	250.43	235.36	1.36	7.85	0.41	2.41
	<i>Perishable Food Items</i>	4.99	274.80	277.82	254.31	-1.09	8.06	-0.06	0.45
2.	Alcoholic Bev. & Tobacco	1.41	425.77	384.12	313.65	10.84	35.75	0.24	0.69
3.	Clothing & Footwear	7.57	272.94	269.25	254.13	1.37	7.40	0.11	0.62
4.	Housing, Water, Electricity, Gas & Fuels	29.41	237.55	228.37	210.71	4.02	12.74	1.09	3.45
5.	Furnishing & Household Equipment Maint.	4.21	265.70	262.78	241.18	1.11	10.17	0.05	0.45
6.	Health	2.19	244.82	243.64	224.67	0.48	8.97	0.01	0.19
7.	Transport	7.20	232.44	223.75	202.71	3.88	14.67	0.25	0.94
8.	Communication	3.22	145.40	145.40	133.63	0.00	8.81	0.00	0.17
9.	Recreation & Culture	2.02	224.67	223.20	208.71	0.66	7.65	0.01	0.14
10.	Education	3.94	301.36	297.26	281.89	1.38	6.91	0.07	0.34
11.	Restaurants & Hotels	1.23	316.31	311.96	293.25	1.39	7.86	0.02	0.12
12.	Miscellaneous	2.76	296.19	289.66	265.48	2.25	11.57	0.07	0.37

Main contributors to month-on-month and year-on-year percentage changes are given below and detail is given in Annexure A.

1. Month-on-month Top few commodities which varied from previous month i.e. June 2019 are given below:-

Food Increased: Potatoes (16.84%), Cigarettes (11.13%), Pulse Moong (5.41%), Eggs (5.06%), Gur (4.80%), Pulse Mash (4.50%), Wheat Flour (3.58%), Fresh Vegetables (3.56%), Pulse Masoor (2.83%), Vegetable Ghee (2.49%), Bakery and Confectionary (2.45%), Rice (1.77%), Milk Fresh (1.41%), Pulse Gram (1.31%), Tomatoes (1.17%), Sugar (1.09%) and Meat (0.93%).

Decreased: Chicken (8.26%), Fresh fruit (7.95%), Onions (1.73%) and Betel Leaves & Nuts (0.65%).

Non-food Increased: Gas (30.90%), Motor Vehicles (9.47%), Construction Input Items (5.09%), Personal Equipments (4.69%), Transport Services (4.23%), Motor Fuel (3.20%), Electricity (2.63%) and Household Rent (1.86%).

Year-on-Year: Top few commodities which varied from previous year i.e. July, 2018 are given below:-

Food Increased: Onions (58.83%), Pulse Moong (47.62%), Cigarettes (37.37%), Gur (31.37%), Sugar (30.72%), Pulse Mash (Washed) (22.27%), Potatoes (21.07%), Spices (12.91%), Pulse Gram (12.29%), Meat (11.97%), Pulse Masoor (10.78%), Wheat Flour (8.63%), Cooking Oil (8.57%), Rice (6.83%), Tea (5.39%) and Milk Fresh (5.24%).

Decreased: Tomatoes (18.07%), Eggs (11.45%), Betel Leaves & Nuts (10.26%), Gram Whole (3.46%) and Chicken (2.91%).

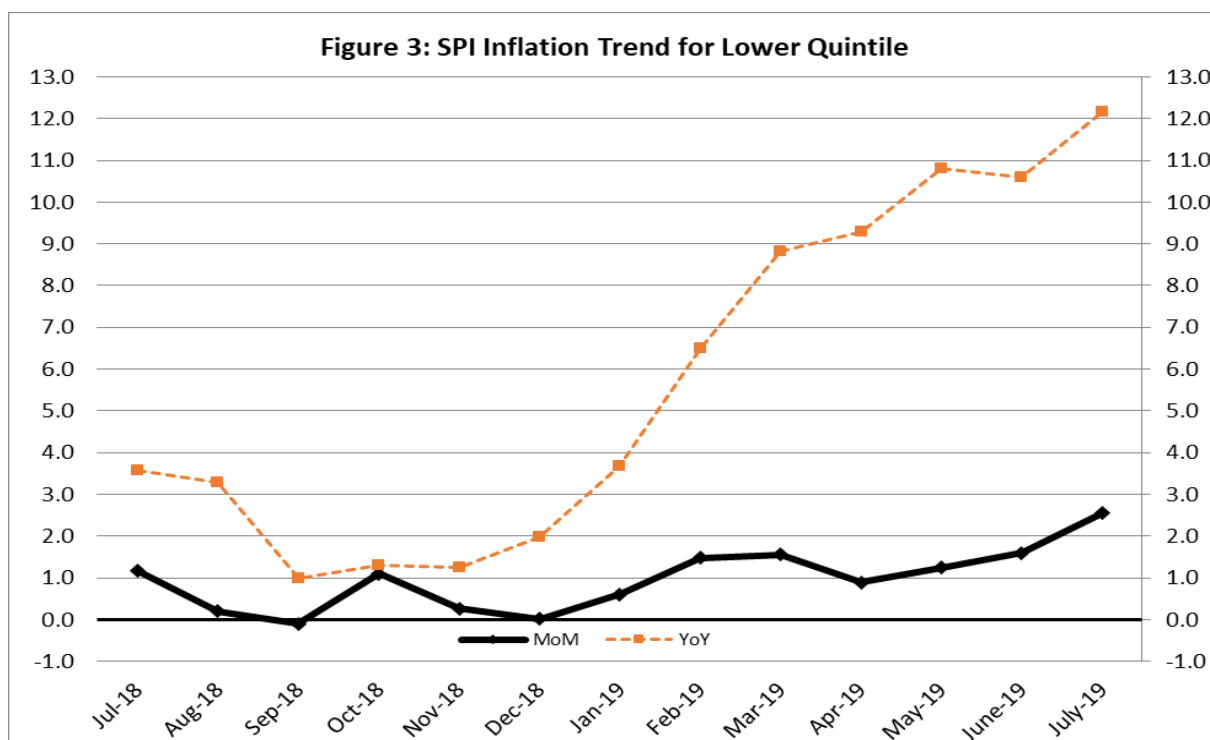
Non-food Increased: Gas (142.57%), Motor Fuel (22.68%), Motor Vehicles (20.36%), Personal Equipments (18.17%), Construction Input Items (14.97%), Motor Vehicle Accessories (13.27%), Electricity (11.33%), Transport Services (8.14%), Personal Care (6.83%) and Household Servant (6.20%).

II. Sensitive Price Indicator

Quintile-wise percentage changes YoY and MoM are given below in Table 3. The series from July 2018 to July 2019 is also graphed below in Figure 3.

Table 3: Sensitive Price Indicator (Base 2007-08)					
Quintiles	Indices			% Change July, 2019 over	
	July, 2019	June, 2019	July, 2018	June, 2019	July, 2018
1	242.54	236.50	216.24	2.55	12.16
2	254.37	245.92	224.93	3.44	13.09
3	256.53	247.85	226.95	3.50	13.03
4	267.18	262.69	232.27	1.71	15.03
5	272.71	270.12	231.79	0.96	17.65
Combined	263.01	257.34	229.18	2.20	14.76

Table 3.1 : Weekly Percentage Change of SPI During July, 2019				
Quintiles	% Change with Previous week			
	04.07.2019	11.07.2019	18.07.2019	25.07.2019
Quintile 1	0.92	1.51	0.46	0.23
Combined	0.83	1.35	0.48	0.18



iii. Wholesale Price Index

The Wholesale Price Index for July, 2019 increased by 3.1% over June, 2019. It increased by 13.5% over the corresponding month of the last year. YoY and MoM movements, from July, 2018 to July, 2019 are also graphed below in Figure 4.

Table 4: Wholesale Price Index by Group of Commodities (Base 2007-08)

No.	Group	Group Weight (%)	Indices			% Change July, 2019 over		Impact (in %age points) July, 2019 over	
			July, 2019	June, 2019	July, 2018	June, 2019	July, 2018	June, 2019	July, 2018
	General	100.00	272.34	264.15	240.04	3.10	13.46	3.10	13.46
1.	Agriculture, Forestry & Fishery Products	25.77	290.10	294.06	274.85	-1.35	5.55	-0.39	1.64
2.	Ores & Minerals, Electricity, Gas & Water	12.04	352.31	290.44	243.17	21.30	44.88	2.82	5.47
3.	Food Products, Beverages & Tobacco, Textiles, Apparel & Leather Products	31.11	270.27	270.14	243.73	0.05	10.89	0.01	3.44
	i. Food Products, Bev. & Tobacco	20.07	274.02	271.77	246.87	0.83	11.00	0.17	2.27
	ii. Textiles and Apparel	10.33	261.41	260.04	240.60	0.53	8.65	0.05	0.90
	iii. Leather Products	0.71	293.07	370.84	200.77	-20.97	45.97	-0.21	0.27
4.	Other Transportable Goods except Metal Products, Machinery & Equipment	22.37	238.52	233.95	214.04	1.95	11.44	0.39	2.28
5.	Metal Products, Machinery & Equipment	8.72	203.60	195.49	186.28	4.15	9.30	0.27	0.63

Main contributors to month-on-month and year-on-year percentage changes are given below and detail is given in Annexure B.

1. **Month-on-month** Top few commodities which varied from previous month i.e. June, 2019 are given below:-

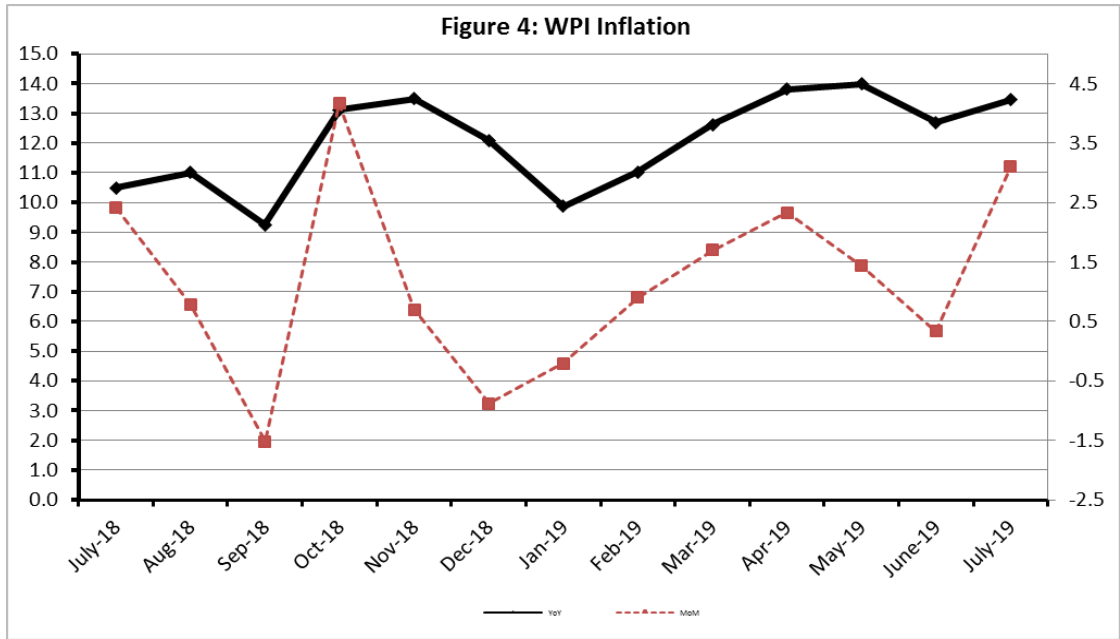
Increased: Natural Gas (29.78%), Lathe Machines (16.34%), Stimulant & Spice Crops (14.27%), Electrical Energy (13.32%), Eggs (11.52%), Motor Vehicles (11.50%), Potatoes (11.17%), Steel Bar & Sheets (11.08%), Radio & Television (9.24%), Pipe Fittings (8.90%), Bricks Blocks & Tiles (8.22%), Steel Products (7.21%), Woven Fabrics (6.62%), Auto Tyres (6.31%), Milk & Cream in Solid Form (6.21%), Furnace Oil and Other Glass Articles (6.07%) each, Fridge, Washing Machines. Etc. (5.52%), Chemicals (5.18%), Other Oil Seeds (5.10%), Electric Wires (4.95%), Ceramics & Sanitary Fixtures (4.40%), Cotton Seeds (4.15%), Paints & Varnishes (3.89%), Vegetables (3.72%), Plastic Products (3.51%), Rice (3.46%), Glass Sheets (3.34%), Wheat Flour (3.26%), Cement (3.20%), Synthetic Carpets (3.14%), Oil Cakes and Bed Sheets (3.06%) each.

Decreased: Other Leather N.E.C (32.72%), Fresh Fruits (14.45%), Poultry (9.41%), Jowar (6.67%), Fibre Crops (6.20%), Raw Animal Materials/Wool (1.38%) and Maize (1.16%),

2. **Year-on-year** Top few commodities which varied from previous year i.e. July, 2018 are given below:-

Increased: Other Leather N.E.C (114.14%), Natural Gas Liquefied (92.91%), Lathe Machine (44.40%), Jowar (41.42%), Sugar Crops (35.74%), Sugar (32.07%), Stimulant & Spice Crops (31.31%), Auto Tyres (29.09%), Potatoes (25.98%), Spices (24.59%), Tobacco Products (23.69%), Steel Bar & Sheets (21.55%), Motor Cycles (20.69%), Motor Vehicles (20.44%), Chemicals (19.38%), Maize (17.45%), Radio & Television (17.37%), Pipe Fittings (16.78%), Paints & Varnishes (16.63%), Fertilizers (16.31%) and Fridge, Washing Machines. Etc. (16.16%),

Decreased: Eggs (16.68%), Poultry (5.09%), Hides & Fur Skin (4.12%) and Fibre Crops (2.25%).



Annexure – A: CPI by Commodity Groups and Commodities (2007-08=100)

Item and Specification	Weight	Index Numbers			% Change in July 2019 over			
		July 2019	June 2019	July 2018	June 2019	July 2018		
<i>General</i>	100.00	252.46	246.82	228.80	+	2.29	+	10.34
<i>Food and non-alcoholic Beverages</i>	34.834	256.84	254.36	238.08	+	0.97	+	7.88
1 Wheat	0.3477	219.88	211.05	198.49	+	4.18	+	10.78
2 Wheat Flour	4.1648	230.02	222.06	211.75	+	3.58	+	8.63
3 Wheat Product	0.0959	223.74	218.70	213.01	+	2.30	+	5.04
4 Besan	0.1500	279.51	275.43	261.62	+	1.48	+	6.84
5 Rice	1.5821	209.34	205.70	195.96	+	1.77	+	6.83
6 Cereals	0.1563	276.20	273.24	263.90	+	1.08	+	4.66
7 Bakery & Confectionary	1.1550	245.40	239.53	228.08	+	2.45	+	7.59
8 Nimco	0.4574	267.43	264.99	260.65	+	0.92	+	2.60
9 Meat	2.4303	346.47	343.29	309.43	+	0.93	+	11.97
10 Chicken	1.3596	185.74	202.46	191.31	-	8.26	-	2.91
11 Fish	0.2970	241.19	240.70	228.91	+	0.20	+	5.36
12 Milk Fresh	6.6800	300.69	296.50	285.71	+	1.41	+	5.24
13 Milk Products	0.6338	292.69	288.08	277.00	+	1.60	+	5.66
14 Milk Powder	0.1129	270.33	261.52	244.99	+	3.37	+	10.34
15 Eggs	0.4555	181.35	172.61	204.79	+	5.06	-	11.45
16 Mustard Oil	0.0952	174.51	171.66	164.01	+	1.66	+	6.40
17 Cooking Oil	1.7538	152.98	151.69	140.90	+	0.85	+	8.57
18 Vegetable Ghee	2.0714	161.99	158.05	146.78	+	2.49	+	10.36
19 Dry Fruits	0.2543	313.97	313.70	293.12	+	0.09	+	7.11
20 Fresh Fruits	1.8649	287.00	311.78	267.66	-	7.95	+	7.23
21 Pulse Masoor	0.2712	174.59	169.78	157.67	+	2.83	+	10.73
22 Pulse Moong	0.2336	321.91	305.38	218.06	+	5.41	+	47.62
23 Pulse Mash (Washed)	0.2098	252.50	241.63	206.51	+	4.50	+	22.27
24 Pulse Gram	0.2361	289.02	285.29	257.38	+	1.31	+	12.29
25 Gram Whole	0.1616	260.31	260.01	269.64	+	0.12	-	3.46
26 Beans	0.0269	272.86	270.65	244.74	+	0.82	+	11.49
27 Potatoes	0.4452	247.12	211.51	204.11	+	16.8	+	21.07
28 Onion	0.5093	319.24	324.85	200.99	-	1.73	+	<u>58.83</u>
29 Tomatoes	0.4172	146.22	144.53	178.46	+	1.17	-	18.07
30 Fresh Vegetables	1.7543	288.71	278.79	290.45	+	3.56	-	0.60
31 Sugar	1.0445	258.46	255.67	197.72	+	1.09	+	30.72
32 Gur	0.0220	327.31	312.32	249.15	+	4.80	+	31.37
33 Honey	0.0446	411.66	406.02	348.07	+	1.39	+	18.27
34 Sweet Meat	0.2483	288.51	285.90	271.48	+	0.91	+	6.27
35 Beverages	1.1990	242.19	240.22	233.36	+	0.82	+	3.78
36 Jam, Tomato Ketchup & Pickles	0.2454	250.17	244.42	231.54	+	2.35	+	8.05
37 Condiments	0.2656	307.46	304.45	285.60	+	0.99	+	7.65
38 Spices	0.5441	292.93	291.97	259.44	+	0.33	+	12.91
39 Tea	0.8377	322.71	322.11	306.22	+	0.19	+	5.39
<i>Alcoholic Beverages, Tobacco</i>	1.4135	425.76	384.13	313.65	+	10.8	+	35.74
40 Cigarettes	1.3906	423.00	380.62	307.93	+	11.1	+	37.37
41 Betel Leaves & Nuts	0.0229	593.32	597.21	661.19	-	0.65	-	10.26
<i>Clothing and footwear</i>	7.5708	272.94	269.25	254.13	+	1.37	+	7.40
42 Cotton Cloth	1.7286	276.11	270.26	247.24	+	2.16	+	11.68
43 Woolen Cloth	0.8759	293.26	285.01	266.09	+	2.89	+	10.21
44 Readymade Garments	0.9739	278.92	275.79	264.02	+	1.13	+	5.64
45 Woolen Readymade Garments	0.3964	289.82	289.87	266.61	-	0.02	+	8.71
46 Hosiery	0.5094	285.97	281.81	265.98	+	1.48	+	7.52

Annexure A: CPI by Commodity Groups and Commodities (2007-08=100)

Item and Specification	Weight	Index Numbers			% Change in July 2019 over	
		Jul 2019	Jun 2019	Jul 2018	Jun 2019	Jul 2018
47 Dopatta	0.4412	286.55	282.02	263.12	+ 1.61	+ 8.90
48 Cleaning and Laundry	0.2110	313.50	310.23	290.77	+ 1.05	+ 7.82
49 Tailoring	0.8840	368.36	365.95	349.59	+ 0.66	+ 5.37
50 Footwear	1.5504	181.78	181.38	179.77	+ 0.22	+ 1.12
<u>Housing, water, Elec., Gas and other</u>	29.4149	237.55	228.37	210.71	+ 4.02	+ 12.74
51 House Rent	21.8149	218.77	214.78	206.00	+ 1.86	+ 6.20
52 Construction Input Items	0.5623	318.42	303.00	276.97	+ 5.09	+ 14.97
53 Construction Wage Rates	0.3331	288.46	284.21	265.71	+ 1.50	+ 8.56
54 Water Supply	0.4971	196.05	195.63	189.09	+ 0.21	+ 3.68
55 Electricity	4.3985	265.08	258.28	238.10	+ 2.63	+ 11.33
56 Gas	1.5756	383.45	292.94	158.08	+ 30.9	+ 142.57
57 Kerosene Oil	0.0057	298.98	298.12	272.04	+ 0.29	+ 9.90
58 Firewood Whole	0.2277	310.59	309.64	298.03	+ 0.31	+ 4.21
<u>Furnishing and household equip-</u>	4.2082	265.70	262.78	241.18	+ 1.11	+ 10.17
59 Furniture	0.3315	263.38	257.55	236.67	+ 2.26	+ 11.29
60 Household Textiles	0.6489	257.79	256.30	243.00	+ 0.58	+ 6.09
61 Household Equipment	0.5936	207.57	205.81	190.99	+ 0.86	+ 8.68
62 Utensils	0.3212	286.54	278.60	252.51	+ 2.85	+ 13.48
63 Plastic Products	0.2547	255.98	250.68	225.98	+ 2.11	+ 13.28
64 Washing Soaps & Detergents	0.7893	269.67	265.35	241.08	+ 1.63	+ 11.86
65 Sewing Needle & Dr Cell	0.1496	240.25	238.85	219.36	+ 0.59	+ 9.52
66 Household Servant	1.0432	299.97	299.18	271.59	+ 0.26	+ 10.45
67 Marriage Hall Charges	0.0762	280.41	280.41	266.62	+ 0.00	+ 5.17
<u>Health</u>	2.1868	244.82	243.63	224.67	+ 0.49	+ 8.97
68 Drugs & Medicines	1.2667	210.54	209.38	190.05	+ 0.55	+ 10.78
69 Medical Equipments	0.0080	285.70	283.19	260.09	+ 0.89	+ 9.85
70 Doctor (MBBS) Clinic Fee	0.5904	325.23	324.35	304.41	+ 0.27	+ 6.84
71 Medical Tests	0.3217	231.24	229.39	213.79	+ 0.81	+ 8.16
<u>Transport</u>	7.2023	232.44	223.75	202.71	+ 3.88	+ 14.67
72 Motor Vehicles	0.6630	231.42	211.41	192.28	+ 9.47	+ 20.36
73 Motor Vehicle Accessories	0.2439	245.41	241.01	216.65	+ 1.83	+ 13.27
74 Motor Fuel	3.0269	223.28	216.36	182.00	+ 3.20	+ 22.68
75 Mechanical Service	0.4552	261.43	258.72	244.59	+ 1.05	+ 6.88
76 Motor Vehicle Tax	0.1099	211.97	211.97	210.18	+ 0.00	+ 0.85
77 Transport Services	2.7034	237.73	228.09	219.83	+ 4.23	+ 8.14
<u>Communication</u>	3.2198	145.39	145.39	133.63	+ 0.00	+ 8.80
78 Postal Services	0.0662	347.68	347.68	272.45	+ 0.00	+ 27.61
79 Communication & Apparatus	3.1536	141.15	141.14	130.72	+ 0.01	+ 7.98
<u>Recreation and culture</u>	2.0227	224.66	223.19	208.71	+ 0.66	+ 7.64
80 Recreation & Culture	0.8634	138.20	138.17	134.65	+ 0.02	+ 2.64
81 Text Books	0.5706	323.14	323.14	304.43	+ 0.00	+ 6.15
82 Newspapers	0.1934	242.78	242.78	202.94	+ 0.00	+ 19.63
83 Stationery	0.3953	262.49	255.05	235.12	+ 2.92	+ 11.64
<u>Education</u>	3.9431	301.36	297.27	281.89	+ 1.38	+ 6.91
84 Education	3.9431	301.36	297.27	281.89	+ 1.38	+ 6.91
<u>Restaurants and hotels</u>	1.2286	316.32	311.97	293.25	+ 1.39	+ 7.87
85 Readymade Food	1.2286	316.32	311.97	293.25	+ 1.39	+ 7.87
<u>Misc. goods and services</u>	2.7550	296.18	289.65	265.48	+ 2.25	+ 11.56
86 Personal Care	1.4935	256.33	254.78	239.94	+ 0.61	+ 6.83
87 Cosmetics	0.3853	244.56	242.50	222.96	+ 0.85	+ 9.69
88 Blades	0.0322	229.09	227.91	204.43	+ 0.52	+ 12.06
89 Personal Equipments	0.8440	392.82	375.22	332.42	+ 4.69	+ 18.17

Annexure B: Wholesale Price Indices by Major Groups & Commodities (2007-08=100)

Item and Specification	Weight	Index Numbers			% Change in Jul 2019 over			
		Jul 19	Jun 19	Jul 18	Jun 2019	Jul 2018		
General	100.0000	272.34	264.15	240.04	+	3.10	+	13.46
Agriculture Forestry & Fisher	25.7674	290.10	294.06	274.85	-	1.35	+	5.55
001 Wheat	0.6297	223.47	219.21	202.51	+	1.94	+	10.35
002 Maize	0.6764	256.44	259.45	218.34	-	1.16	+	17.45
003 Rice	2.4413	210.48	203.44	181.75	+	3.46	+	15.81
004 Sorghum / Jowar	0.0214	431.70	462.53	305.26	-	6.67	+	41.42
005 Millet / Bajra	0.0374	276.28	274.51	244.12	+	0.64	+	13.17
006 Vegetables	1.2441	353.28	340.61	347.33	+	3.72	+	1.71
007 Fresh Fruits	1.5144	327.17	382.45	328.17	-	14.45	-	0.30
008 Dry Fruits	0.2478	289.45	284.02	285.82	+	1.91	+	1.27
009 Cotton Seeds	1.1511	303.71	291.62	267.32	+	4.15	+	13.61
010 Other Oil Seeds	0.0722	206.07	196.07	193.29	+	5.10	+	6.61
011 Edible Roots / Potatoes	0.2540	244.73	220.14	194.26	+	11.17	+	25.98
012 Stimulant & Spice Crops	0.1634	418.74	366.45	318.90	+	14.27	+	31.31
013 Pulses	0.4901	262.69	259.03	236.97	+	1.41	+	10.85
014 Sugar Crops	1.0725	349.69	349.69	257.62	+	0.00	+	35.74
015 Fibre Crops	5.3169	265.72	283.29	271.84	-	6.20	-	2.25
016 Unmanufactured Tobacco	0.0742	331.92	327.11	317.53	+	1.47	+	4.53
017 Poultry	0.5633	192.98	213.02	203.33	-	9.41	-	5.09
018 Raw Milk from Bovine Animals	7.0279	292.16	290.78	284.87	+	0.47	+	2.56
019 Eggs	0.5034	178.94	160.46	214.76	+	11.52	-	16.68
020 Raw Animal Materials / Wool	0.0351	187.42	190.05	176.84	-	1.38	+	5.98
021 Hides & Fur Skins, Raw	0.4834	93.06	93.04	97.06	+	0.02	-	4.12
022 Fuel Wood in Logs	0.0179	300.39	296.01	283.56	+	1.48	+	5.94
023 Fish Live Fresh or Chilled	1.7295	506.24	505.44	451.22	+	0.16	+	12.19
Ores/Minerals, Elec., Gas & W	12.0389	352.31	290.44	243.17	+	21.30	+	44.88
024 Coal not Agglomerated	0.7508	155.29	155.29	155.29	+	0.00	+	0.00
025 Natural Gas Liquefied	5.7385	407.99	314.37	211.49	+	29.78	+	<u>92.91</u>
026 Salt & Pure Sodium Chloride	0.0584	290.99	290.99	269.74	+	0.00	+	7.88
027 Electrical Energy	5.4912	321.72	283.90	288.00	+	13.32	+	11.71
Food, Beverages, Tobacco, Textil	31.1122	270.27	270.14	243.73	+	0.05	+	10.89
Food Products, Beverages &	20.0718	274.02	271.77	246.87	+	0.83	+	11.00
028 Meat of Animals	3.4559	367.93	363.58	336.15	+	1.20	+	9.45
029 Vegetables & Fruit Juice	0.0058	243.83	242.67	226.66	+	0.48	+	7.58
030 Dried Fruits & Nuts	0.1733	339.56	336.68	298.38	+	0.86	+	13.80
031 Fruit Juices	0.3880	201.72	197.32	186.08	+	2.23	+	8.40
032 Vegetable Oils Refined	1.9242	171.53	169.21	159.08	+	1.37	+	7.83
033 Vegetable Ghee	1.5632	144.26	140.14	130.51	+	2.94	+	10.54
034 Oil Cakes	0.9611	265.37	257.49	242.30	+	3.06	+	9.52
035 Processed Liquid Milk	4.4437	306.92	308.71	293.74	-	0.58	+	4.49
036 Milk & Cream in Solid Form	0.0316	258.09	242.99	224.54	+	6.21	+	14.94
037 Ice Cream	0.0047	287.85	287.85	266.02	+	0.00	+	8.21
038 Dairy Products N.E.C	0.0117	307.61	305.97	278.41	+	0.54	+	10.49
039 Wheat Flour	2.3034	213.49	206.75	191.95	+	3.26	+	11.22
040 Other Cereal Flour	0.0604	232.50	230.55	215.20	+	0.85	+	8.04
041 Sugar Refined	1.7975	274.62	274.66	207.93	-	0.01	+	32.07
042 Chocolate	0.0139	101.59	100.00	100.00	+	1.59	+	1.59
043 Sugar Confectionary	0.0738	128.15	128.15	127.25	+	0.00	+	0.71
044 Coffee & Tea	0.7303	293.62	293.65	277.31	-	0.01	+	5.88
045 Spices	0.1449	252.10	252.13	202.35	-	0.01	+	24.59
046 Other Food Products	0.0336	323.23	320.27	294.50	+	0.92	+	9.76
047 Mineral Water	0.0207	219.33	217.45	211.50	+	0.86	+	3.70
048 Beverages	0.6303	180.59	178.90	172.63	+	0.94	+	4.61
049 Tobacco Products	1.2998	393.80	393.80	318.37	+	0.00	+	23.69
Textiles & Apparels	10.3289	261.41	260.04	240.60	+	0.53	+	8.65
050 Cotton Yarn	5.2491	288.43	287.06	262.52	+	0.48	+	9.87
051 Nylon Yarn	0.1719	143.99	143.99	143.99	+	0.00	+	0.00
052 Blended Yarn	0.1689	213.37	209.91	197.90	+	1.65	+	7.82
053 Woven Fabrics	0.0128	367.78	344.94	321.49	+	6.62	+	14.40
054 Cotton Fabrics	0.6343	230.85	229.31	220.60	+	0.67	+	4.65
055 Other Fabrics	1.1016	239.51	238.78	227.85	+	0.31	+	5.12
056 Silk & Reyon Fabrics	0.7350	199.38	195.54	188.81	+	1.96	+	5.60
057 Towels	0.1235	308.50	308.50	305.52	+	0.00	+	0.98

Annexure B: Wholesale Price Indices by Major Groups & Commodities (2007-08=100)

Item and Specification	Weight	Index Numbers			% Change in Jul 2019 over	
		Jul 19	Jun 19	Jul 18	Jun 2019	Jul 2018
058 Blankets	0.0029	277.52	277.52	265.03	+ 0.00	+ 4.71
059 Bed Sheets	0.0913	277.23	269.00	256.87	+ 3.06	+ 7.93
060 Quilts	0.0019	232.74	232.74	222.32	+ 0.00	+ 4.69
061 Woolen Carpets	0.0383	199.40	199.40	196.43	+ 0.00	+ 1.51
062 Synthetic Carpets	0.0566	138.98	134.75	130.95	+ 3.14	+ 6.13
063 Hosiery Products	0.8832	274.49	273.87	250.36	+ 0.23	+ 9.64
064 Readymade Garments	1.0576	228.07	228.07	204.85	+ 0.00	+ 11.34
Leather Products	0.7115	293.07	370.84	200.77	- 20.97	+ 45.97
065 Leather Without Hair	0.2973	229.55	229.55	212.68	+ 0.00	+ 7.93
066 Other Leather N.E.C	0.2567	443.31	658.87	207.02	- 32.72	+ 114.14
067 Footwears	0.1575	168.09	168.09	168.09	+ 0.00	+ 0.00
Other Transportable Goods	22.3659	238.52	233.95	214.04	+ 1.95	+ 11.44
068 Timber	0.0165	250.12	245.35	237.00	+ 1.94	+ 5.54
069 Printing Paper	0.4279	174.76	174.76	171.65	+ 0.00	+ 1.81
070 Hard Board	0.1579	291.67	291.67	260.42	+ 0.00	+ 12.00
071 Coke	0.2797	163.45	163.45	163.45	+ 0.00	+ 0.00
072 Motor Spirit	1.5336	190.37	190.37	164.49	+ 0.00	+ 15.73
073 Diesel Oil	5.2664	271.61	271.61	244.20	+ 0.00	+ 11.22
074 Kerosine Oil	0.2151	262.91	262.91	229.00	+ 0.00	+ 14.81
075 Furnace Oil	3.2664	189.89	179.02	171.20	+ 6.07	+ 10.92
076 Mobil Oil	0.7114	232.72	231.13	206.18	+ 0.69	+ 12.87
077 Chemicals	1.7720	234.53	222.97	196.45	+ 5.18	+ 19.38
078 Dyeing Material	0.1539	157.67	157.67	150.72	+ 0.00	+ 4.61
079 Fertilizers	2.8657	274.88	271.33	236.33	+ 1.31	+ 16.31
080 Pesticides	0.2763	325.56	325.17	312.32	+ 0.12	+ 4.24
081 Insecticides	0.1276	151.54	151.50	144.49	+ 0.03	+ 4.88
082 Paints & Varnishes	0.1916	387.40	372.88	332.15	+ 3.89	+ 16.63
083 Medicines	1.1428	197.27	196.13	177.70	+ 0.58	+ 11.01
084 Soaps & Detergents	0.8168	203.10	202.35	191.52	+ 0.37	+ 6.05
085 Auto Tyres	0.2703	228.67	215.10	177.14	+ 6.31	+ 29.09
086 Plastic Products	0.4550	255.39	246.72	240.35	+ 3.51	+ 6.26
087 Glass sheets	0.2089	348.58	337.30	304.55	+ 3.34	+ 14.46
088 Other Glass Articles	0.1635	351.41	331.31	318.10	+ 6.07	+ 10.47
089 Ceramics & Sanitary Fixture	0.0244	263.26	252.16	236.54	+ 4.40	+ 11.30
090 Bricks, Blocks & Tiles	0.1566	247.51	228.70	223.37	+ 8.22	+ 10.81
091 Cement	1.8145	239.52	232.09	237.45	+ 3.20	+ 0.87
092 Bed Foam	0.0006	184.00	181.83	175.33	+ 1.19	+ 4.94
093 Matches	0.0505	172.57	172.57	171.36	+ 0.00	+ 0.71
Metal Product, Machinery & Eq	8.7156	203.60	195.49	186.28	+ 4.15	+ 9.30
094 Pig Iron	0.0593	128.97	128.97	128.97	+ 0.00	+ 0.00
095 Steel Bar & Sheets	1.4022	206.19	185.63	169.64	+ 11.08	+ 21.55
096 Pipe Fittings	0.0780	273.82	251.44	234.48	+ 8.90	+ 16.78
097 Steel Products	0.3879	203.07	189.42	177.24	+ 7.21	+ 14.57
098 Engines & Motors	0.0046	116.98	116.98	116.98	+ 0.00	+ 0.00
099 Vacuum Pumps	0.0155	123.69	123.69	123.69	+ 0.00	+ 0.00
100 Air Conditioners	0.0049	221.55	218.02	203.80	+ 1.62	+ 8.71
101 Cultivators	0.0551	190.66	190.66	190.66	+ 0.00	+ 0.00
102 Chuff Cutter	0.1293	153.46	153.46	153.46	+ 0.00	+ 0.00
103 Tractors	0.0028	226.93	226.93	216.82	+ 0.00	+ 4.66
104 Lathe Machines	0.0525	348.09	299.21	241.06	+ 16.34	+ 44.40
105 Concrete Mixture	0.0107	138.83	138.83	138.83	+ 0.00	+ 0.00
106 Fridge,WashM,SewM,Fans,Iron	1.1645	265.69	251.78	228.73	+ 5.52	+ 16.16
107 Electric Wires	0.0912	222.49	212.00	208.22	+ 4.95	+ 6.85
108 Lighting Equipments	1.4431	179.06	175.37	174.04	+ 2.10	+ 2.88
109 Radio & Television	0.1843	164.81	150.87	140.42	+ 9.24	+ 17.37
110 Motor Vehicles	0.0244	262.69	235.59	218.11	+ 11.50	+ 20.44
111 Motorcycles	0.2570	161.98	160.54	134.21	+ 0.90	+ 20.69
112 Bicycles	3.3483	196.16	194.31	191.22	+ 0.95	+ 2.58

Annexure – C

CPI by Income Quintiles and Commodity Groups (2007-08=100 July, 2019 (% change with June, 2019) MoM

Income Quintiles	General	Food and non-alcoholic Beverages	Alcoholic Beverages, Tobacco	Clothing and foot-wear	Housing, water, Elec., Gas and other fuels	Furnishing and household equipment maintenance	Health	Transport	Communication	Recreation and culture	Education	Restaurants and hotels	Misc. goods and services
Combine	2.29	0.97	10.84	1.37	4.02	1.11	0.49	3.88	0.00	0.66	1.38	1.39	2.25
Income Quintile 1	2.45	1.49	11.07	1.46	4.99	1.54	0.49	3.12	0.00	0.90	1.50	1.38	0.95
Income Quintile 2	2.99	1.29	11.06	1.42	7.47	1.51	0.49	2.94	0.00	0.85	1.50	1.36	0.95
Income Quintile 3	2.99	1.15	11.15	1.39	7.39	1.46	0.49	2.96	0.00	0.78	1.45	1.37	1.27
Income Quintile 4	2.11	0.98	11.24	1.37	3.62	1.41	0.49	2.87	0.01	0.71	1.45	1.40	1.51
Income Quintile 5	1.81	0.71	10.38	1.34	2.13	0.94	0.47	4.34	0.01	0.54	1.33	1.40	3.14

CPI by Income Quintiles and Commodity Groups (2007-08=100) July, 2019 (% change with July, 2018) YoY

Income Quintiles	General	Food and non-alcoholic Beverages	Alcoholic Beverages, Tobacco	Clothing and foot-wear	Housing, water, Elec., Gas and other fuels	Furnishing and household equipment maintenance	Health	Transport	Communication	Recreation and culture	Education	Restaurants and hotels	Misc. goods and services
Combine	10.34	7.88	35.74	7.40	12.74	10.17	8.97	14.67	8.80	7.64	6.91	7.87	11.56
Income Quintile 1	9.16	8.62	37.25	7.57	9.08	10.62	9.00	10.28	4.19	7.18	6.17	8.00	8.01
Income Quintile 2	9.71	8.30	37.15	7.48	12.01	10.46	9.04	10.99	5.14	7.09	6.09	7.97	8.03
Income Quintile 3	9.70	8.06	37.19	7.40	11.71	10.25	9.08	11.82	6.00	7.02	6.04	7.88	8.89
Income Quintile 4	10.37	7.83	37.08	7.35	13.92	10.20	9.04	12.70	7.37	7.15	6.03	7.89	9.52
Income Quintile 5	10.99	7.58	33.85	7.39	13.71	10.10	8.88	15.90	10.25	8.17	7.33	7.84	14.03